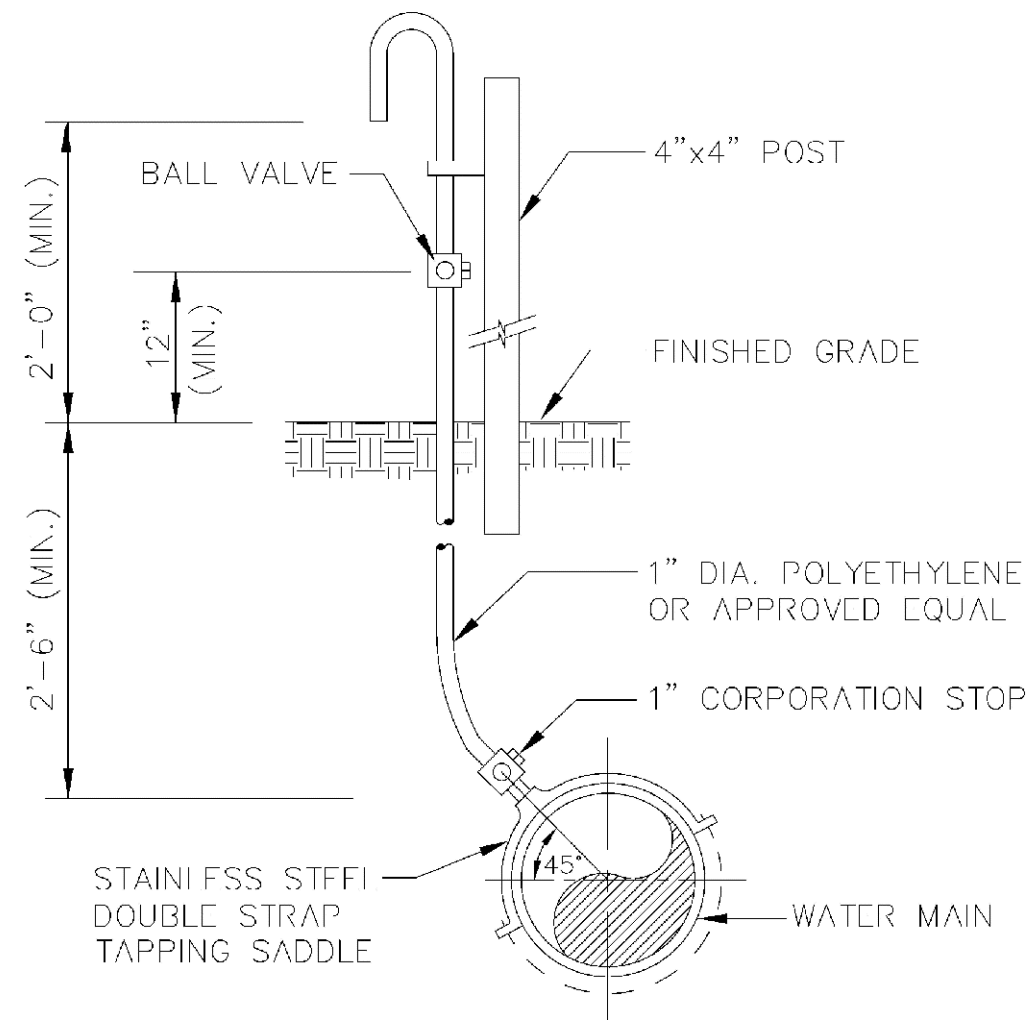
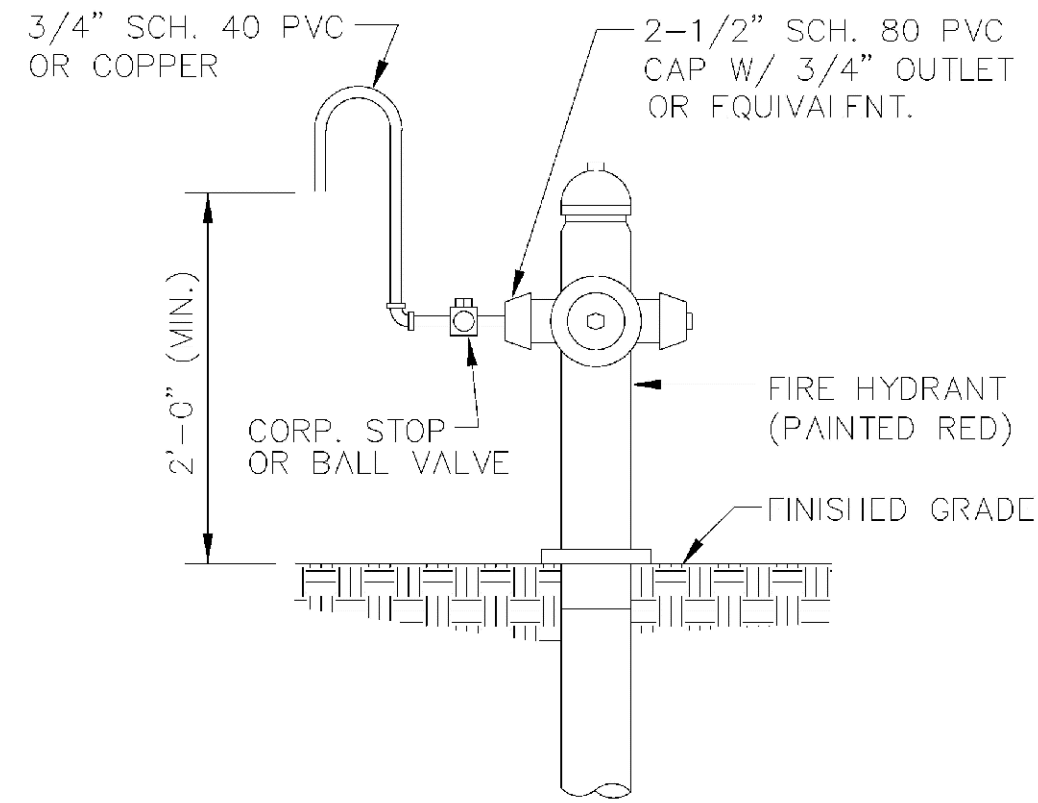


ENGINEERING STANDARDS 2022			
REVISIONS		ENGINEERING DIVISION CITY OF POMPAÑO BEACH	SHALLOW TYPE MANHOLE
BY	DATE		
S.S.	JUNE 2005		
T.W.	11-2007		
A.S.	09-2021		
SCALE: N.T.S.			DATE: JUNE 2022 DWG. NO. 216-1

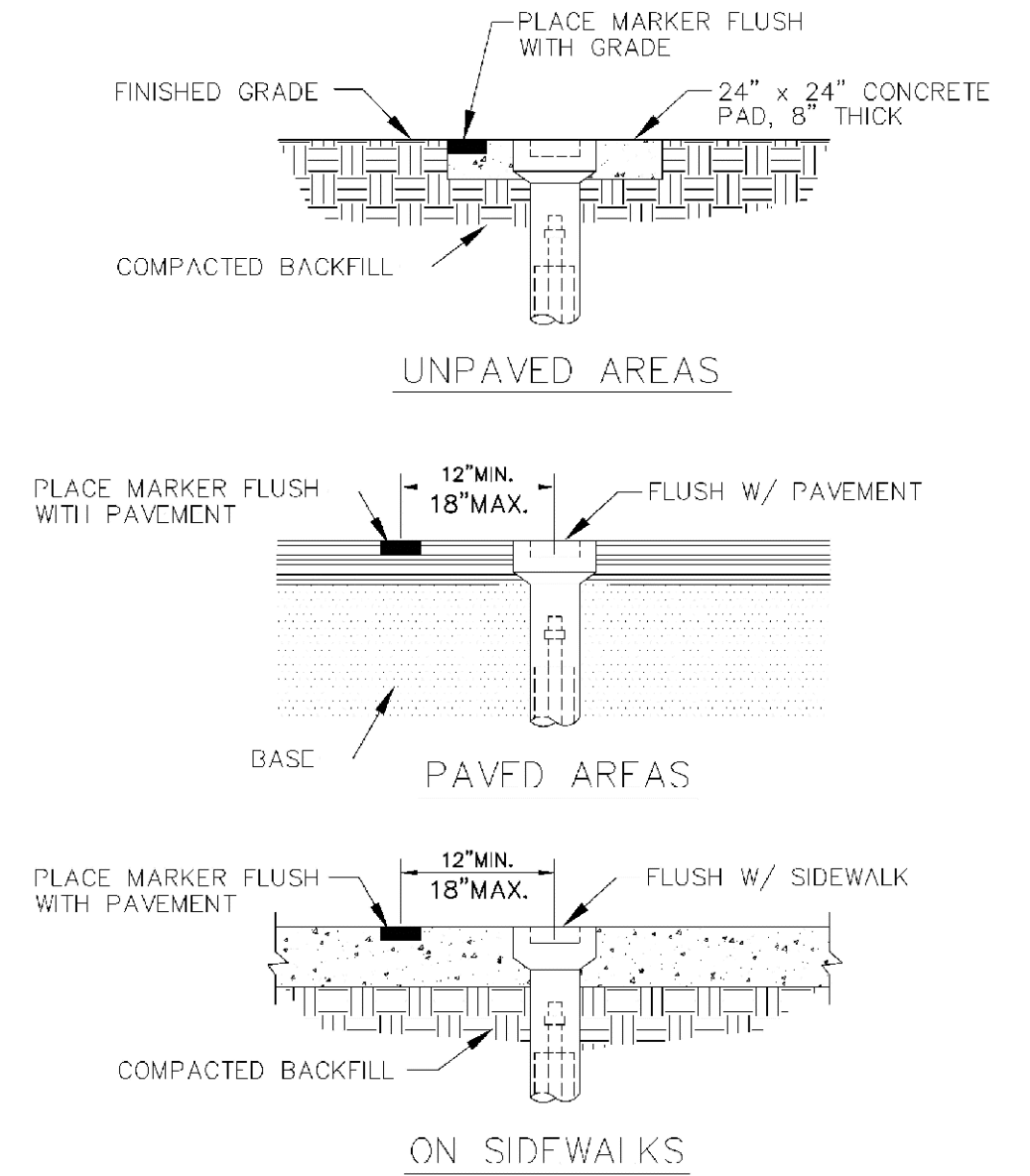


ALL D.I.P. TO BE PAINTED
BLUE ON TOP HALF OF PIPE.

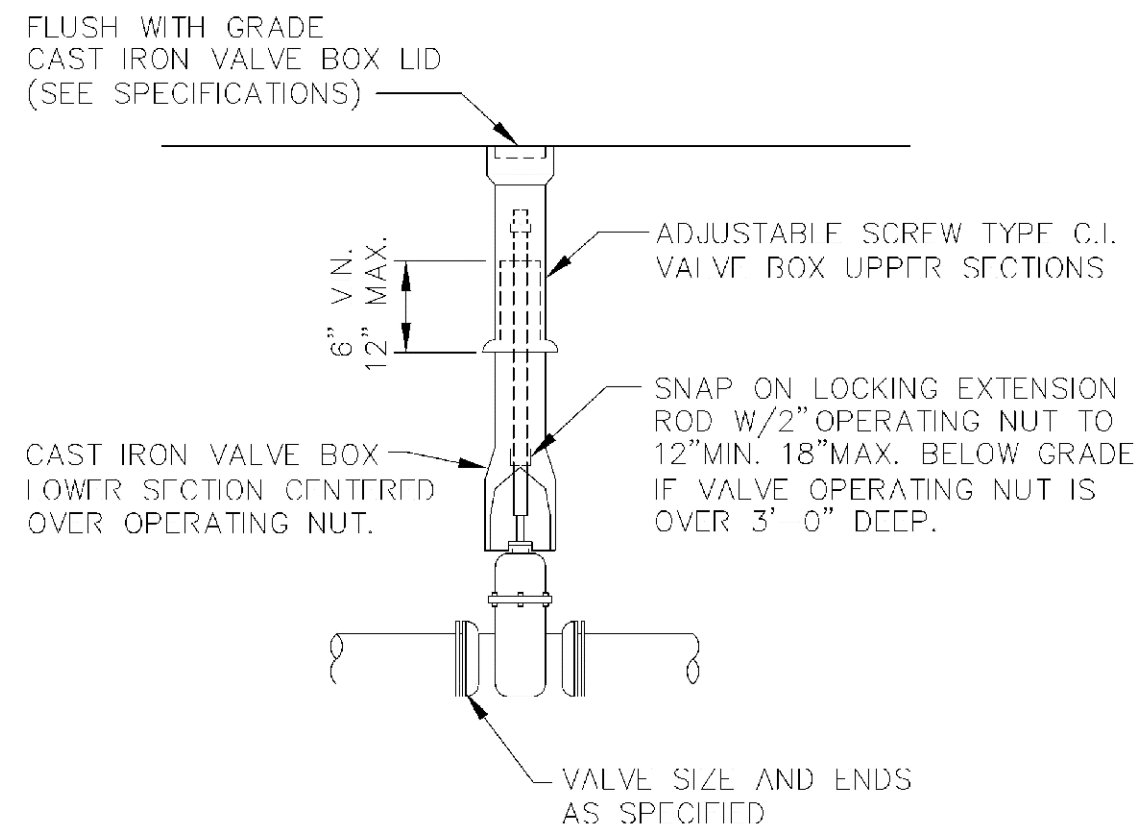
ENGINEERING STANDARDS 2022			
REVISIONS		ENGINEERING DIVISION CITY OF POMPAÑO BEACH	SAMPLE POINT (MAIN)
BY	DATE		
S.S.	04-2005		
SCALE: N.T.S.			DATE: MAY 2022 DWG. NO. 100-1



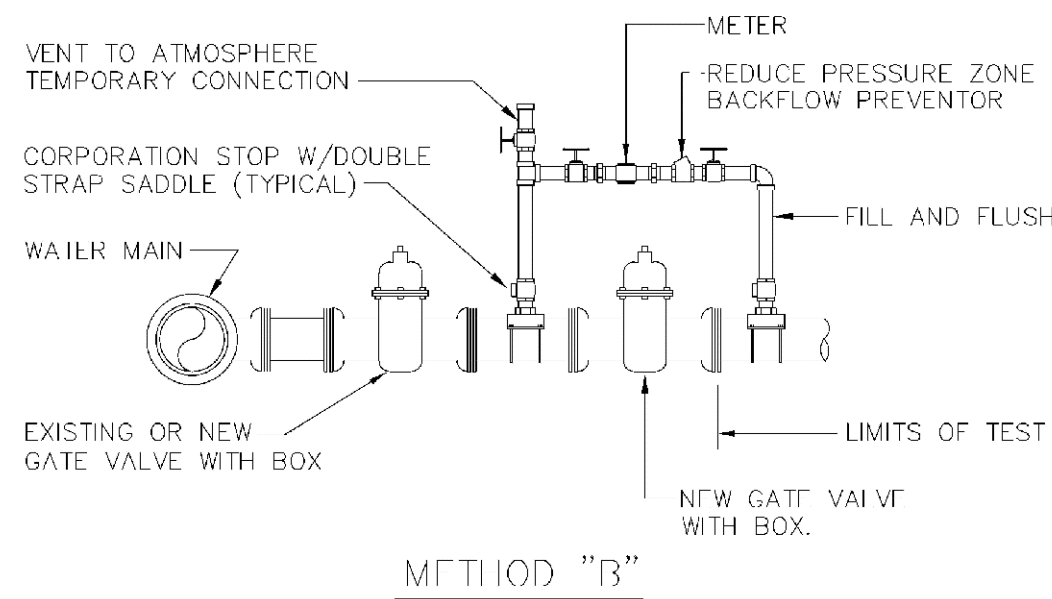
<u>SAMPLE POINT (HYDRANT)</u>			
ALL POMPAÑO BEACH HYDRANTS SHALL BE PAINTED RED.			
ALL D.I.P. TO BE PAINTED BLUE ON TOP HALF OF PIPE.			
ENGINEERING STANDARDS 2022			
REVISIONS	ENGINEERING DIVISION CITY OF POMPAÑO BEACH		SAMPLE POINT (HYDRANT)
BY DATE			
S.S. 04-2005			
SCALE: N.T.S.		DATE: MAY 2022 DWG. NO. 101-1	



ENGINEERING STANDARDS 2022			
REVISIONS		ENGINEERING DIVISION CITY OF POMPAÑO BEACH	VALVE BOX SETTINGS
BY	DATE		
S.S.	04-2005		
		SCALE: N.T.S.	DATE: MAY 2022
			DWG. NO.
			102-1



<u>GATE OR PLUG VALVE SETTING</u>			
USE MEGALUGS AT ALL PIPE JOINTS			
ALL D.I.P. TO BE PAINTED BLUE ON TOP HALF OF PIPE.			
ENGINEERING STANDARDS 2022			
REVISIONS		ENGINEERING DIVISION CITY OF POMPAÑO BEACH	GATE OR PLUG VALVE SETTINGS
BY	DATE		
S.S.	04-2005		
T.W.	11-2007		
SCALE: N.T.S.			DATE: MAY 2022 DWG. NO. 103-1



NOTES:

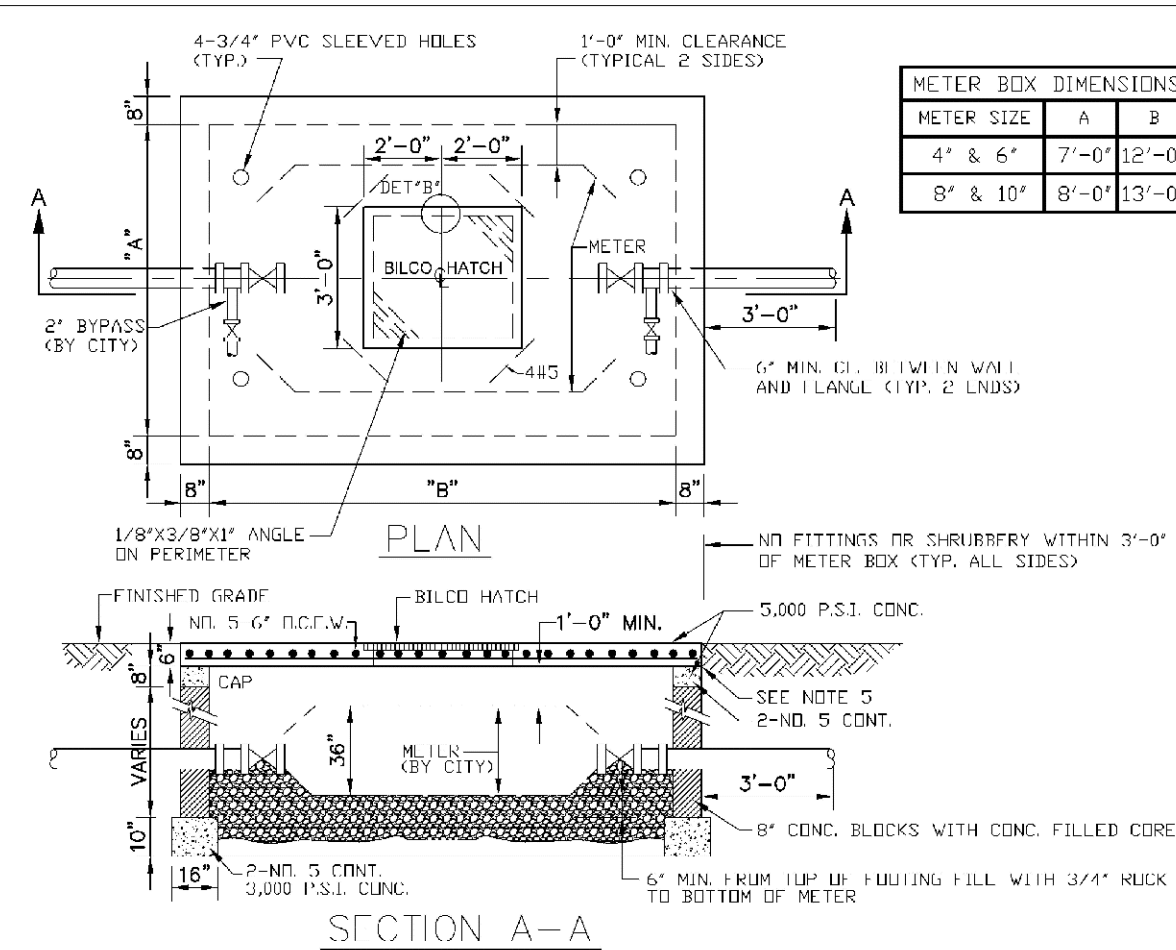
1. WATER MAIN TO BE PRESSURE TESTED AND DISINFECTED ACCORDING TO BROWARD COUNTY PUBLIC HEALTH UNIT REGULATIONS, AWWA, AND MUNICIPAL SPECIFICATIONS IN EFFECT.
2. BACTERIOLOGICAL TESTS ARE TO BE PERFORMED BY THE CONTRACTOR AND AN APPROVED IN-SITU LABORATORY.
3. REMOVE TEMPORARY CONNECTION AT SADDLE ON NEW MAINS AFTER FILLING AND FLUSHING HAS BEEN COMPLETED AND REPLACED WITH BRASS PLUG
4. PROVIDE ALL NECESSARY THURST BLOCKS OR OTHER RESTRAINTS.
5. FILLING AND FLUSHING LOCATIONS SHALL BE COORDINATED BY THE CONTRACTOR, ENGINEER, AND CITY.
6. VENT TO ATMOSPHERE SHALL REMAIN OPEN DURING ALL PHASES OF PRESSURE TESTING.
7. AFTER COMPLETION FILL AND FLUSH CONNECTION
8. USE MEGALUGS AT ALL PIPE JOINTS

FILLING AND FLUSHING CONNECTION

ALL D.I.P. TO BE PAINTED
BLUE ON TOP HALF OF PIPE.

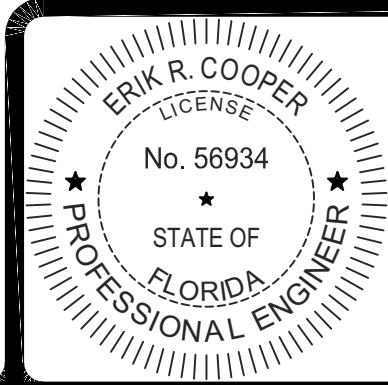
ENGINEERING STANDARDS 2022

REVISIONS			ENGINEERING DIVISION CITY OF POMPAÑO BEACH	FILLING / FLUSHING CONNECTION	
BY	DATE				DATE: MAY 2022 DWG. NO. 104-1
S.S.	04-2005				
T.W.	11-2007				
S.S.	01-2012				
SCALE: N.T.S.					



<div>NOTES</div> <div>1. THIS STRUCTURE & LID ARE FOR NON-TRAFFIC BEARING ONLY.</div> <div>2. DO NOT CONSTRUCT METER BOX UNTIL AFTER METER IS IN PLACE.</div> <div>3. CENTER BOX AROUND METER.</div> <div>4. DO NOT TIE CONCRETE LID TO CONCRETE WALLS.</div> <div>5. TOP OF LID TO BE @ FINISH GRADE ELEV.</div> <div>6. CUT OUT REPLACEABLE 10" SQUARE OVER EACH READING HEAD & FASTEN WITH CHAIN</div> <div>7. FITS NEPTUNE R450 ANTENNA</div> <div>8. BILCO HATCH MODEL J-AL OR JD-AL OR EQUAL</div>										
<div>LARGE METER BOX</div>										
<div>ENGINEERING STANDARDS 2022</div>										
<div>REVISIONS</div> <table><tr><td>BY</td><td>DATE</td></tr><tr><td>T.W.</td><td>03-2008</td></tr><tr><td>S.S.</td><td>01-2012</td></tr><tr><td>S.S.</td><td>11-2012</td></tr></table>		BY	DATE	T.W.	03-2008	S.S.	01-2012	S.S.	11-2012	<div>LARGE METER BOX</div> <div>ENGINEERING DIVISION</div> <div>CITY OF POMPAÑO BEACH</div> <div>SCALE: N.T.S.</div>
BY	DATE									
T.W.	03-2008									
S.S.	01-2012									
S.S.	11-2012									
		<div>DATE: MAY 2022</div> <div>DWG. NO. 105-1</div>								

2001 N. ANDREWS AVE



THIS ITEM HAS BEEN DIGITALLY
SIGNED AND SEALED BY
ERIK R. COOPER, P.E. ON
4/12/2024.

PRINTED COPIES OF THIS
DOCUMENT ARE NOT
CONSIDERED SIGNED AND
SEALED AND THE SIGNATURE
MUST BE VERIFIED ON ANY
ELECTRONIC COPIES.



CHENEY BROTHERS POMPAÑO BEACH
SECTION 27, TOWNSHIP 48S., RANGE 42E.
CITY OF POMPAÑO BEACH, FLORIDA
CONCEPTUAL WATER AND
WASTEWATER DETAILS

REVISIONS

DESIGN E.C. DRAWN B.L. CHECKED APPROVED DATE

JOB NO. 22-187 DRAWING NO. 22187C12 SHEET 12 OF 15